

## DSUB SV FE SSDP ANG73-254 37P PL2 GC4-HT

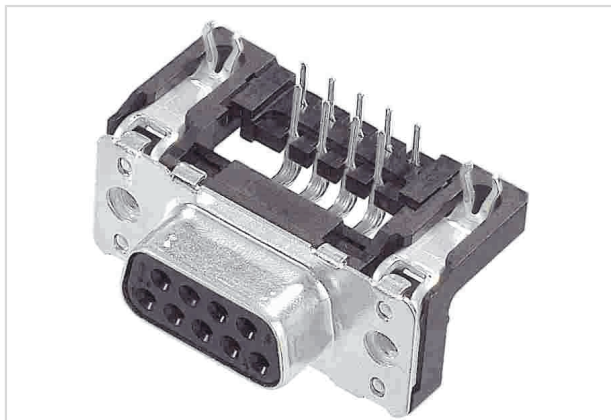


Image is for illustration purposes only. Please refer to product description.

Part number	09 66 456 6613
Specification	DSUB SV FE SSDP ANG73-254 37P PL2 GC4-HT
HARTING eCatalogue	<a href="https://b2b.harting.com/09664566613">https://b2b.harting.com/09664566613</a>

### Identification

Category	Connectors
Series	D-Sub
Identification	Standard
Element	Connector
Description of the contact	Stamped Angled

### Version

Termination method	Reflow soldering termination (THR)
Gender	Female
Size	D-Sub 4
Connection type	Motherboard to daughtercard
Number of contacts	37
Termination length	2.9 mm
PCB fixing	With board locks
Locking type	Fixing flange with fitted screw lock 4-40 UNC

### Technical characteristics

Distance between rows	2.54 mm
Contact spacing (termination side)	2.76 mm
Rated current	6.5 A
Clearance distance	≥1 mm
Creepage distance	≥1 mm



Pushing Performance  
 Since 1945

## Technical characteristics

Insulation resistance	$>10^{10} \Omega$
Contact resistance	$\leq 10 \text{ m}\Omega$
Tightening torque	$\leq 0.4 \text{ Nm}$ Locking screw
Limiting temperature	$-55 \dots +125 \text{ }^\circ\text{C}$ (during reflow soldering max. $+240 \text{ }^\circ\text{C}$ for 15 s)
Insertion force	$\leq 123 \text{ N}$
Withdrawal force	$\geq 11 \text{ N}$ $\leq 82 \text{ N}$
Performance level	2 acc. to CECC 75301-802
Mating cycles	$\geq 250$
Test voltage $U_{r.m.s.}$	1 kV
Isolation group	II ( $400 \leq \text{CTI} < 600$ )
PCB thickness	$\geq 1.6 \text{ mm}$
Installation height	7.3 mm
Hot plugging	No

## Material properties

Material (insert)	Thermoplastic resin, glass-fibre filled (PCT) Shell: steel, nickel plated
Colour (insert)	Grey
Material (contacts)	Copper alloy
Surface (contacts)	Noble metal over Ni
Material flammability class acc. to UL 94	V-0
RoHS	compliant with exemption
RoHS exemptions	6(c): Copper alloy containing up to 4 % lead by weight
ELV status	compliant with exemption
China RoHS	50
REACH Annex XVII substances	Not contained
REACH ANNEX XIV substances	Not contained
REACH SVHC substances	Yes
REACH SVHC substances	Lead
ECHA SCIP number	ecef7555-f643-4ceb-a337-fc54762297f1
California Proposition 65 substances	Yes
California Proposition 65 substances	Lead Nickel



**Pushing Performance**  
Since 1945

## Material properties

Requirement set with Hazard Levels	R26
------------------------------------	-----

## Specifications and approvals

Specifications	DIN 41652
----------------	-----------

## Commercial data

Packaging size	50
Net weight	22.87 g
Country of origin	Romania
European customs tariff number	85366990
GTIN	5713140085770
eCl@ss	27440214 D-Sub coupler